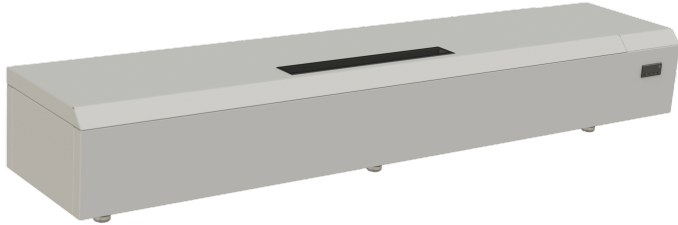


The refrigerated pan rail designed to accommodate 1/3 GN pans. The versatile units can be wall mounted or on the table top. A hinged lid is supplied as standard to reduce energy consumption and maintain safe food temperatures for longer periods.



PRW 9

Key Features:

Stainless Steel Interior & Exterior

32°C Ambient Rated Refrigeration System

Pan Well Holds GN1/3 - 150mm Deep pans

Hinged Lid

R290 Refrigerant

Zero ODP Injected Polyurethane Insulation

+4 / 10°C Refrigerator Temperature Range

Electronic Controller With Easy Read LCD Screen

Hi / Lo Audio Visual Temperature Alarms

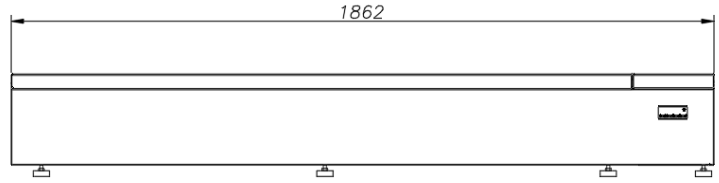
Adjustable Levelling Feet



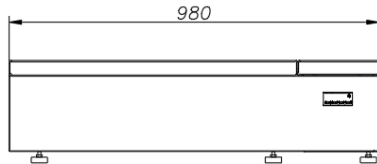
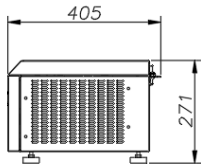
PRW 7

Options:

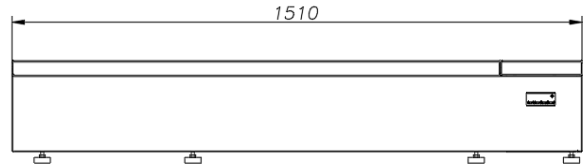
Wall Mounting Kit



PRW-9



PRW-4



PRW-7

Model	PRW-4	PRW-7	PRW-9
Type	Refrigerator	Refrigerator	Refrigerator
Material	ST/ST Int/Ext	ST/ST Int/Ext	ST/ST Int/Ext
Number of GN1/3 Pans Accepted (150mm Deep)	4	7	9
Temperature Range	+4 / +10°C	+4 / +10°C	+4 / +10°C
Exterior WxDxH (mm)	980x405x271	1510x405x271	1862x405x271
Weight (KG)	40	50	60
Refrigerant / GWP	R290 / 3	R290 / 3	R290 / 3
Refrigeration Watts (+45°C Condensing)	250	250	250
Evaporating Temp	-5°C	-5°C	-5°C
Heat Rejection Watts*	320	320	320
Power	220 / 50 / 1	220 / 50 / 1	220 / 50 / 1
Running Amps	1.3	1.3	1.3
Total Electrical Load - kW	0.29	0.29	0.29
Energy Consumption / 24hrs - kWh**	N/A	N/A	N/A
Energy Consumption / Year (AEC) - kWh**	N/A	N/A	N/A
Energy Efficiency Class**	N/A	N/A	N/A

* Heat Rejection is taken at the listed evaporating and condensing condition. Watts is calculated by taking the total power of the cabinet.

** Tested to BS EN ISO 22041

We are constantly innovating and improving our products. Please scan QR code for the most up-to-date version of this spec sheet: